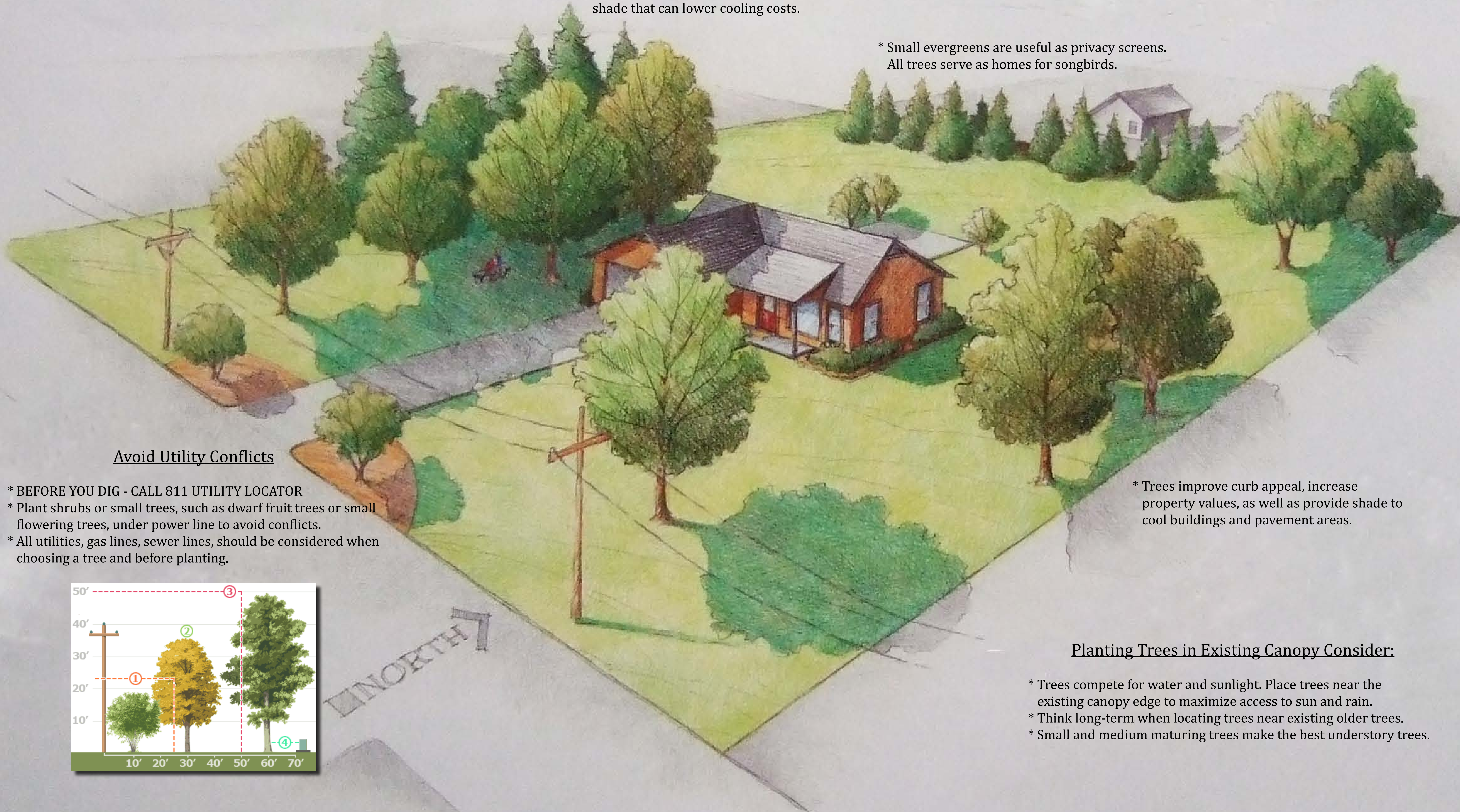


RIGHT TREE, RIGHT PLACE

* Large trees on the south and west sides of a home provide shade that can lower cooling costs.

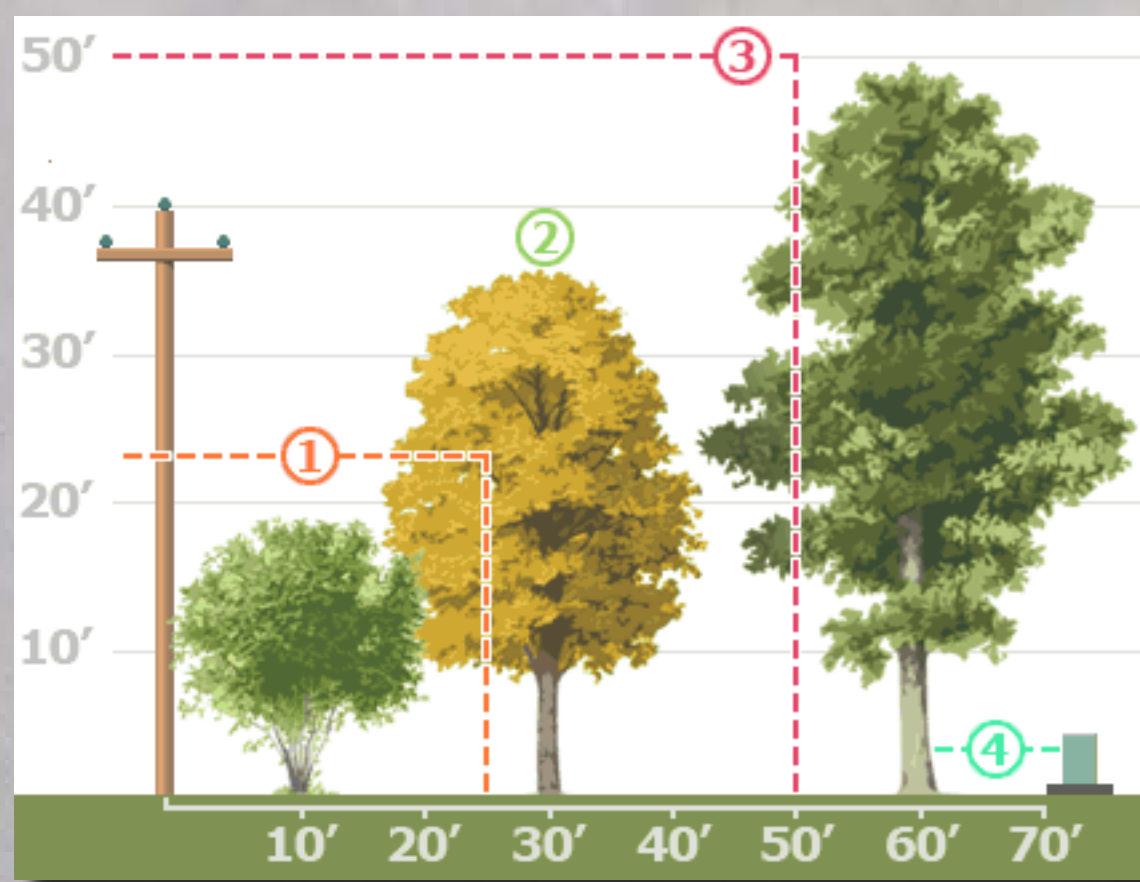
* Small evergreens are useful as privacy screens.
All trees serve as homes for songbirds.



Avoid Utility Conflicts

- * BEFORE YOU DIG - CALL 811 UTILITY LOCATOR
- * Plant shrubs or small trees, such as dwarf fruit trees or small flowering trees, under power line to avoid conflicts.
- * All utilities, gas lines, sewer lines, should be considered when choosing a tree and before planting.

* Trees improve curb appeal, increase property values, as well as provide shade to cool buildings and pavement areas.



Planting Trees in Existing Canopy Consider:

- * Trees compete for water and sunlight. Place trees near the existing canopy edge to maximize access to sun and rain.
- * Think long-term when locating trees near existing older trees.
- * Small and medium maturing trees make the best understory trees.