



**Brawley Farms & Bristol Farms
NeighborWoods Planting Event**

December 7, 2013



Brawley Farms Community Tree Planting

With support from

Catawba Lands Conservancy



City of Charlotte



Brawley Farms Community HOA

Manager

DAVE CABLE

Instructor

BRYAN CHANDLER

Tree Depot

TALCOT MIMS

ROWDY FERGUSON

Tree Masters - Pool Area

JACK MECKLER

RUSS KEANINI

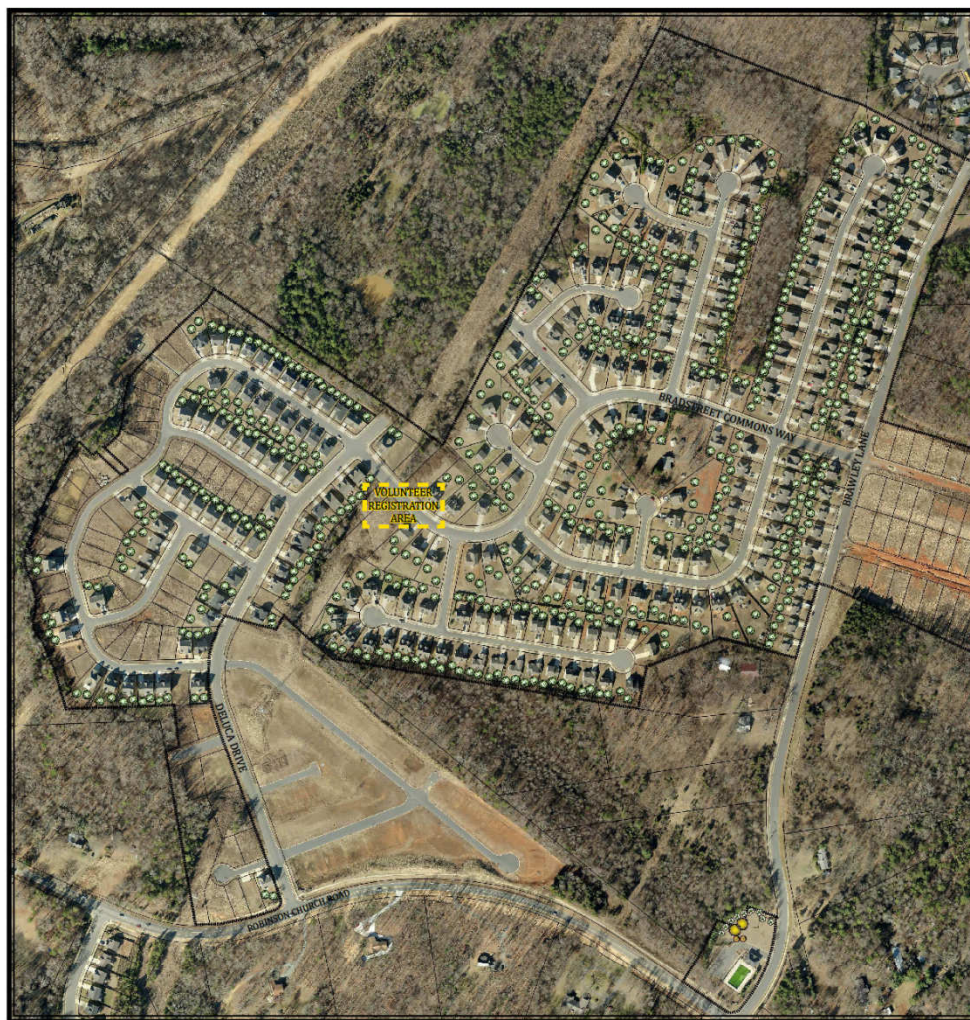
Mulch Detail

MICHAEL DELLINGER

FRANK PSAROUDIS

Placement Director

SHAUN PHILLIPS



SCALE: 1" = 200' North



SCALE: 1" = 60'

Large Maturing Trees



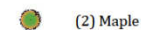
(2) Elm

Medium Maturing Trees

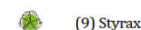


(562) Mixed

Small Maturing Trees



(2) Maple



(9) Styrax

Saturday, December 7th, 2013
Brawley Farms Community Tree Planting





Bristol Farms Community Tree Planting

With support from

Catawba Lands Conservancy



City of Charlotte



Brawley Farms Community HOA

Manager

TIM PORTER

Instructor

CHAD HOLDER

Tree Depot

KATHY PEARCE

Tree Masters

KELLY ROBERTSON

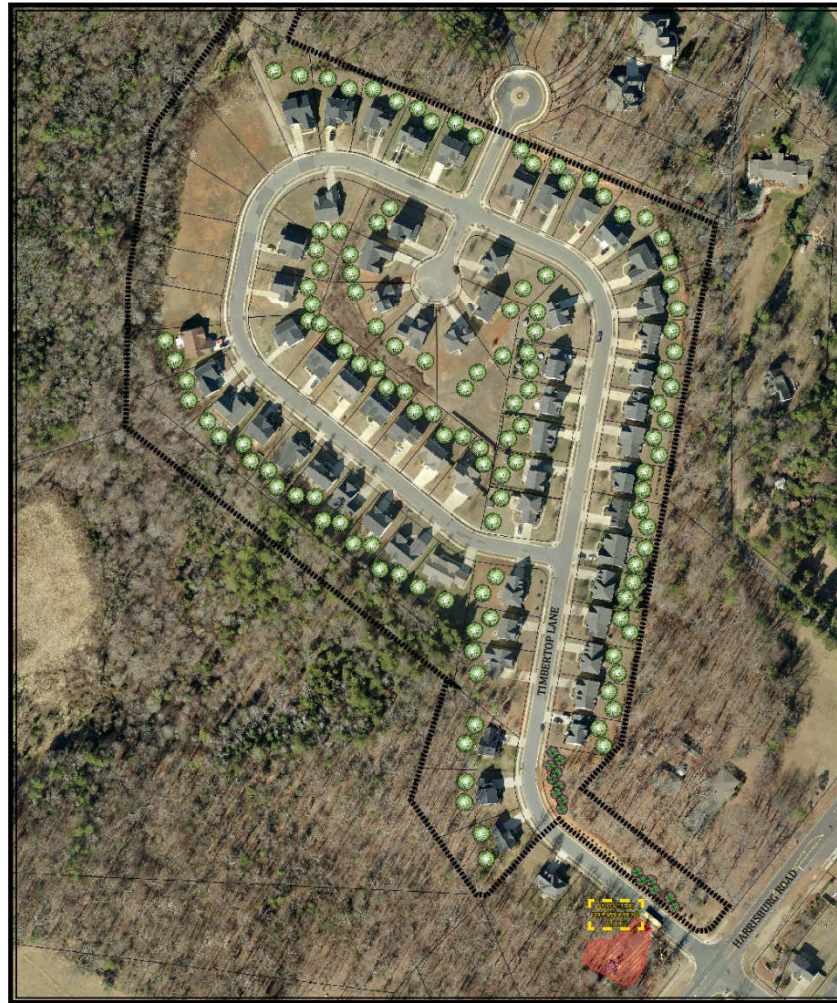
LAURA DOMINGO

Mulch Detail

KATHY PEARCE

Placement Director

SHAUN PHILLIPS



SCALE: 1" = 100' North



SCALE: 1" = 50'

Reforestation

*Trees will be planted at 10' O/C.

Mixed Hardwoods - 0.18 Acres
87 Trees

Medium Maturing Trees

(124) Mixed

Small Maturing Trees

(15) Crape Myrtle

Saturday, December 7th, 2013

Bristol Farms Community Tree Planting



Participants' Feedback

"I had a great time. It was also great doing this with my son and some of my neighbors. My son and I had fun looking up all the different trees and deciding which ones we wanted. He was so excited—and that is hard to get out of a 15 year old. He wanted to make sure we named the trees after all four kids.

Thanks to the HOA for putting this together. When I told a friend about this [day], she was jealous! It was great!"

Participants' Feedback

“This was awesome! Great to see the folks from the community come out and participate. I love my trees already. Can’t wait for spring time!”

“Loving my trees and the participation was awesome!”

“It was great seeing everyone driving around with trees in their trunks and helping each other!! What a great idea to build community by getting to know each other—and make our homes and neighborhood environment beautiful!”





















Fringetree
Chionochloa argentea

Category: Deciduous
Hardiness: Zones 5 to 9
Growth Rate: Moderate to rapid
Adaptability: Full sun to part shade, tolerant of dry soil
Shape: Spreading, rounded to oval
Size: 12-20' high, 12-20' wide
Flower: Small, white, fragrant, clusters at the ends of branches































